



Western Norway
University of
Applied Sciences

INTERACTION
SUSTAINABILITY
INNOVATION

**Non-academic partners in KSP and user involvement
in all types of NFR projects**

Developing applications for the Research Council of Norway

29.11.2023

Lilit Mailyan

Senior adviser, Division for Research, Internationalisation and Innovation (AFII)



Agenda

- › Requirements and tips regarding partnership with non-research organisations in collaborative projects to meet societal and industry-related challenges
- › User involvement in researcher projects and in collaborative projects (with emphasis on health-related topics)



Who are the «Users» in Research?

The Research Council Policy for Open Science:

- > “The definition of who the user is depends on the project and subject area, project partners should have expertise in and knowledge about the research question that is being addressed.
- > **Users may be decision-makers and public authorities, businesses, public sector stakeholders, special-interest organisations with experience in the specific field, who provide professional and/or financial resources for the implementation of the project.”**



RCN calls for proposals in March 2024

	Researcher Project 	Collaborative Project to meet Societal and Industry-related Challenges 	Knowledge-building Project for Industry 
Number of applications	Only one per project manager		
Partners	Only other research organisations	Requirement for cooperation with partners from the business sector and/or other parts of society that participate actively in the project	Requirement for cooperation with partners from the business sector that contribute research funding
Open to	All thematic areas	Defined thematic areas	Defined thematic areas (petroleum and energy)
Expectations of the project	<ul style="list-style-type: none"> World-class scientific environments Groundbreaking projects and innovation High quality research 	<ul style="list-style-type: none"> Research competence in strategically important areas Implementation of research results in the business and public sectors 	

KSP requirement: At least two Norwegian partners that are not research organisations

Who can participate as partners?

Actors from the business sector or other parts of society that will contribute experience and knowledge and ensure that the project and its objectives address real societal and/or industry-related challenges.

- Actors from the business sector or other parts of society
 - the public sector, directorates, municipalities
 - intermunicipal enterprises
 - business sector/private enterprises
 - organisations
 - non-profit organisations
 - industry or trade organisations
- Other research institutions



International partners?

International partners can add great value to the project and must be registered in the application form in the same way as Norwegian partners

- The costs of foreign research organisations can be funded through the grant allocation

Costs are budgeted in the same way as for Norwegian research organisations

- The costs of international partners from the business sector or other parts of society cannot be funded by the project. These costs are therefore not to be entered in the budget tables

Such partners can be mentioned in the project description and the letter of intent and will be taken into account when the application is assessed



KSP requirement: effective collaboration

What do the partners do in the projects?



Partners participate in planning, management, implementation, dissemination and/or contribute to utilisation of the results

Often used for

- working hours – project meetings / steering committee / advisory group
- working hours – active participation in work packages
- materials, testing facilities or other

'The participation requirement'

At least 10% of the project's total costs must be used by the Norwegian partners (applies to costs – not funding)



Participation requirement of 10%

The partners must have expenses in the project, and there is a minimum requirement for how big their share of expenses must be

Add up the figures

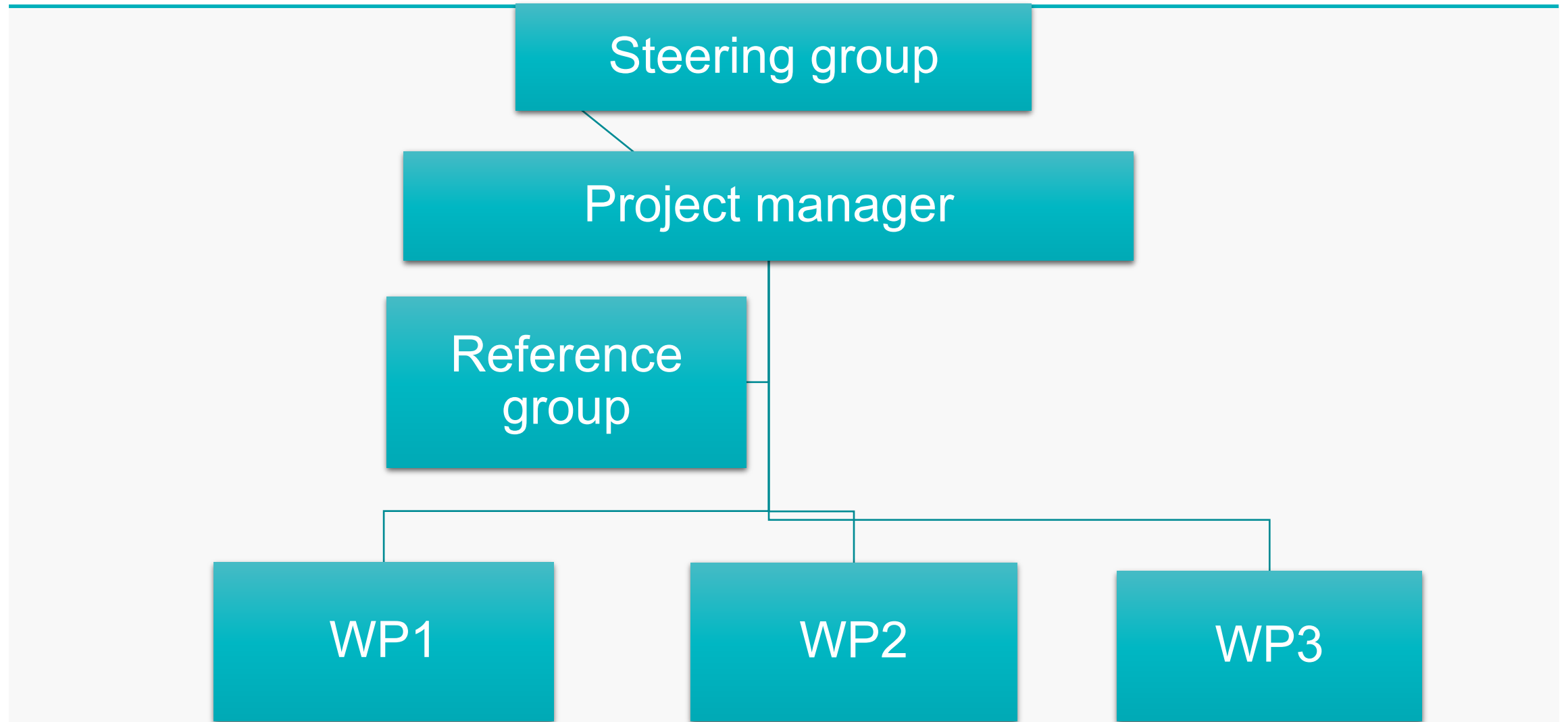
Costs	NOK
The costs of the Project Owner and other research organisations	8,000,000
The costs of Norwegian partners from the business sector or other parts of society	1,000,000
Total	9,000,000
Participation as a percentage	11.1 %

10% of total costs (Costs = funding + own contribution)

BUT – justify if the non-academic partners get more than 20-30% - to make sure it's not contract research



KSP requirement: a steering group or reference group which includes partners that represent the industry-related or societal challenge.



KSP requirement: The grant application must describe how the project incorporates the strategic objectives of all the partners.

- › This must be confirmed in the Letters of Intent.

An example of team composition (summary of the project)

The project team consists of key actors in emergency communication:

- **AI researchers** at Helse Vest IKT and Western Norway University of Applied Science;
- the **Norwegian National Advisory Unit** on Emergency Medical Communication and The health service's operating organization for emergency network;
- stroke experts from Oslo and Haukeland University hospitals (**clinicians**)
- a representative from **the patient organisation** Landsforeningen for Hjerte- og lungesyke (LHL).

An example of team composition (a larger project)

- **Two municipalities**
- **Three end user organizations** (Council on Disability and two Councils for Senior Citizens)
- The Norwegian Association of Local and Regional Authorities (**KS**) at the national level.
- An **interdisciplinary research team** including competence in humanities, social sciences and health sciences
- **Three international researchers** in care service research

Contact potential non-research partners as soon as possible

Request for partnership in health-related projects to municipalities

**Samarbeidsparter i
Kunnskapskommunen**

Kunnskapskommunen
Helse Omsorg Vest

Bergen Alver Askøy Austrheim Bjørnafjorden Masfjorden Osterøy Vaksdal Voss herad

The banner features a red circular logo at the top right. Below the main title, there are nine municipal logos arranged in a row, each with its name underneath: Bergen (gold seal), Alver (blue shield with bridge), Askøy (green shield with tree), Austrheim (blue shield with stripes), Bjørnafjorden (blue shield with sail), Masfjorden (red shield with knot), Osterøy (white shield with blue figures), Vaksdal (yellow shield with black stripes), and Voss herad (red shield with white figure).

Send a request for partnership via this portal as soon as possible and latest by Christmas:
<https://www.bergen.kommune.no/hvaskjer/tema/kunnskapskommunen/forskningshenvendelser>

User involvement beyond partnership in collaborative projects

- › The project proposal must describe how the knowledge developed in the project will be of benefit to wider user groups.
- › Health topic (from last year):
- › In addition to the partners (e.g. a municipality, other public sector body, industry partner, or non-profit organisation), the project must also involve the end users of the research. In the grant application, you must describe how partners and representatives of the end users (e.g. employees and employers, residents, next of kin, patients or non-profit organisations) are involved in the planning and implementation of the project, and in utilisation of the results.

Users in the assessment criteria - collaborative projects

Excellence – quality of R&D activities

The extent to which appropriate consideration has been given to the use of stakeholder/user knowledge

Impact

Communication and exploitation

Quality and scope of communication and engagement activities targeted towards relevant stakeholders/users.

The extent to which the partners are involved in dissemination and utilisation of the project results.

Implementation

The degree of complementarity of the participants and the extent to which the project group has the necessary expertise needed to undertake the research effectively.

User involvement requirements in researcher projects

End users must be represented in the project in the following topics:

- › Research on global health
- › Research on women's health

End users can be consulted and included in reference groups, but not as partners:

- › Research on reduced consumption
- › Research on oceans

Users in the assessment criteria - Researcher projects

Excellence – quality of R&D activities

The extent to which appropriate consideration has been given to... use of stakeholder/user knowledge if appropriate.

Impact

Communication and exploitation

Quality and scope of communication and engagement activities with different target audiences, including relevant stakeholders/users.

User is not a co-researcher

> [Scand J Public Health](#). 2020 Aug;48(6):617-628. doi: 10.1177/1403494819863514. Epub 2019 Jul 18.

Patients participating as co-researchers in health research: A systematic review of outcomes and experiences

[Kirsti Malterud](#) ^{1 2 3}, [Kari Tove Elvbakken](#) ⁴

Affiliations + expand

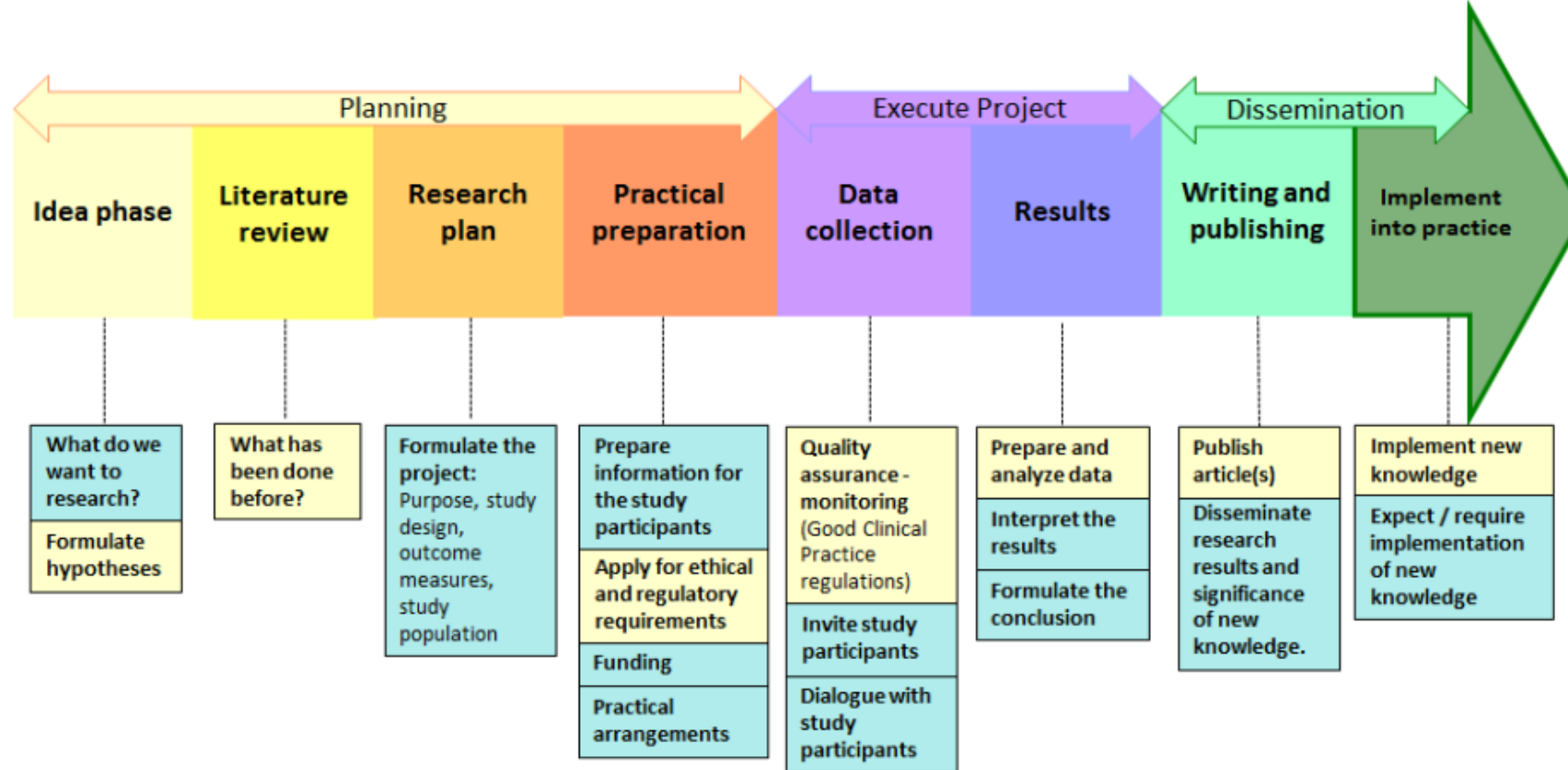
PMID: 31319762 DOI: [10.1177/1403494819863514](#)

Conclusions: Collaboration formats other than participation as co-researchers may be necessary for patient involvement in medical research to add to the existing knowledge.

[Patients participating as co-researchers in health research: A systematic review of outcomes and experiences](#)

Clarify users' role in the project

Patient Engagement in Research



The **research arrow for user participation** is intended as an aid for planning and implementing user participation in research. Developed by FORMI, OUS base on material from EUPATI. (EUPATI used under CC BY-NC-SA 4.0)

Demands high medical / researcher competence Well suited for user participation

Who to recruit as user representatives?

- › For concrete topics: patient organisations
- › For more general topics:
 - › hospitals' user committees (brukerutvalg),
 - › the Joint Organization of the Disabled (Funksjonshemmedes fellesorganisasjon - FFO)
 - › the Cooperation Forum of organizations for the disabled (Samarbeidsforumet av funksjonshemmedes organisasjoner - SAFO)
 - › professional unions
- › These organisations have capacity challenges, so contact early

Practical issues

- › Compensation (time off work, travel, reward for participation in meetings) – ask economists to include these costs in the budget

Honorar

Brukarmedverkarar i Helse Bergen får honorar etter gjeldande satsar for Helse Vest, og satsane er i samsvar med praksis i andre helseføretak. Satsane blir justert kvart andre år. Per 01.01.2022 er satsane **310 kroner per time, og 1900 kroner for møter over 4 timar.** Eksterne oppdragsgivarar er forplikta til å følgje satsane som er sett av Helse Vest når brukarmedverkarar frå Helse Bergen får oppdrag utanfor organisasjonen.

[Helse Bergen compensation rates for users](#)

- › Does the user need special facilitation in order to participate in physical/online meetings?
Meeting format, duration and breaks.
- › language must be adapted to the user

Example of a user involvement description

“User involvement is key in this project, and includes patients, clinicians working in child and adolescent psychiatry services including both psychiatrists and psychologists, and leaders of clinical institutions catering for the relevant patient group.

This group of users will be involved in refining the research questions, in the interpretation of findings, and in understanding how to translate the new evidence into improved practice. This is useful in the writing of the discussion of academic papers, and in understanding how to communicate the findings to clinicians, patients and the public.

Key users are already contacted, and several are already confirmed.”



Check the consistency in the proposal – collaborative project

- › 1.2 Research questions and hypotheses, theoretical approach and methodology:
 - › Describe how relevant stakeholder/user knowledge will be used

- › 2.2 Measures for communication and exploitation:
 - › Describe how the stakeholders/users are involved in the dissemination and utilisation of the project results.

- › 3.2 Project organisation and management
 - › Describe the organisation and management structure. – *users are often represented in an advisory board/ reference group*
 - › Describe and justify the stakeholder/user involvement in the project and explain why this will contribute to carrying out the specific measures which are proposed for the exploitation of the results (see section 2.2)

- › Budget: include user involvement costs

Check the consistency in the proposal – researcher project

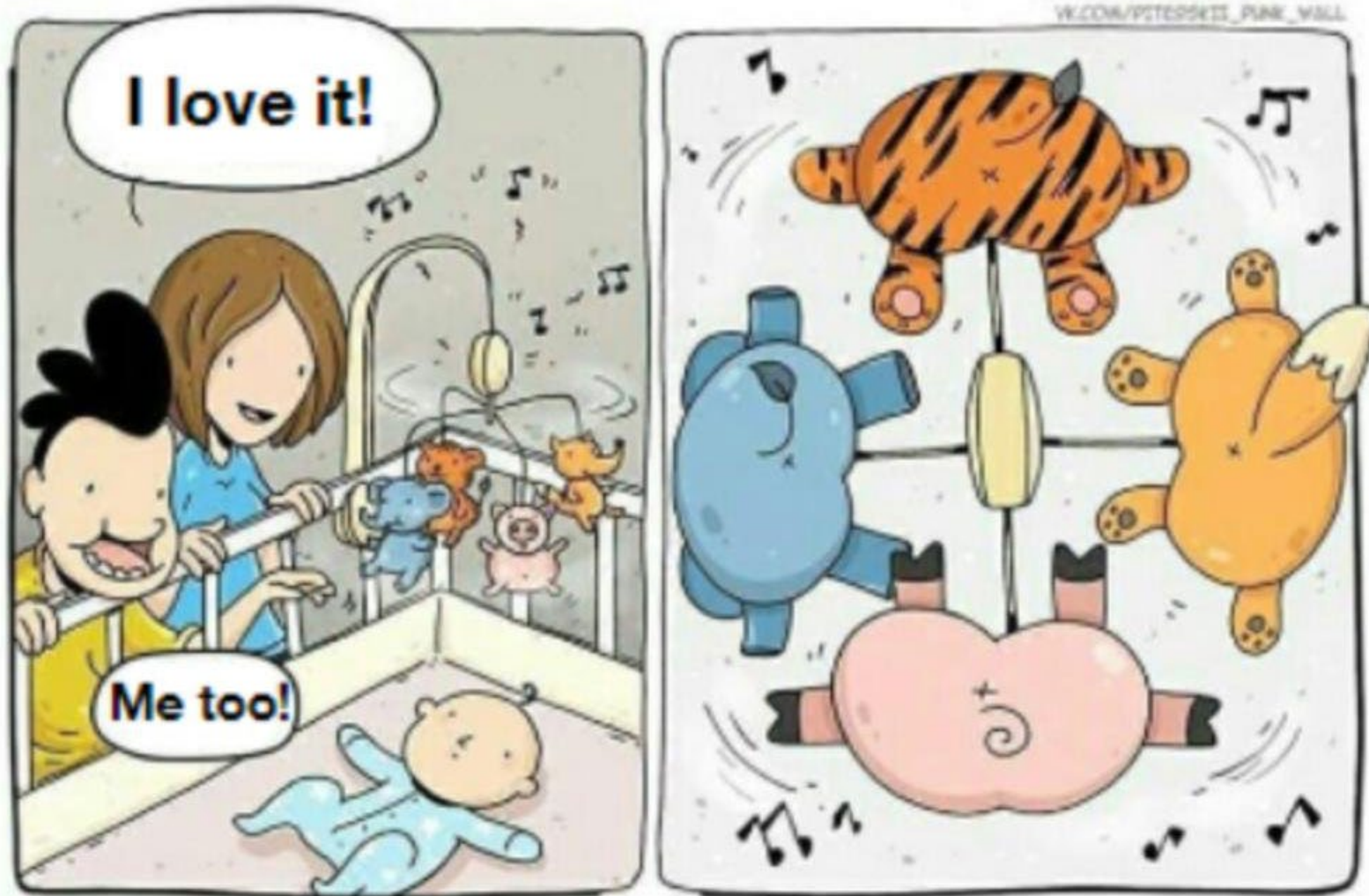
- › 1.2 Research questions and hypotheses, theoretical approach and methodology:
If relevant, describe how stakeholder/user knowledge will be used.
- › 2.2 Measures for communication and exploitation:
Describe briefly the target audiences, including stakeholders/users, of the project outputs (in or beyond the scientific community).
- › 3.2 Project organisation and management
Describe the organisation and management structure. – *users are often represented in an advisory board/ reference group*
- › Budget: include user involvement costs

More resources on user involvement:

- > [Helseforetakenes veileder for brukermedvirkning](#)
- > [EU guide to user involvement](#)



User experience in the centre





Behovsdrevet innovasjon i helsesektoren

[Les mer om InnoMed](#)



Satsingsområder

Digital hjemmeoppfølging •
Hjemmesykehus



Prosessveiledning

Informasjon • Søk • Frister



Verktøy og ressurser

Vevisere • Rapporter • Verktøy



Prosjekter

Erfaringer • Prosessveiledning

Stimulab

- > Hva er Stimulab?
- > **Stimulabs metode – den triple diamanten**
- > Hvordan bli med i Stimulab?
- > Stimulab-prosjekter 2022
- > Slik jobber designerne i Stimulab
- > Stimulab-prosjekter

Stimulabs metode – den triple diamanten

Prosjekter som får støtte fra Stimulab, må forplikte seg til å følge en innovativ arbeidsmetode vi kaller trippel diamant.

